

FISHWAY STATUS REPORT

Date: 7/4/2015
 Inspection Period: 6/28/2015 thru 7/4/2015

All JD Fishways are inspected twice per day during fish season, Mar. 1 - Nov. 30
 Frequent monitoring of the PLC displays in SMF Fisheries Office as necessary.

JOHN DAY DAM



JD/WC Project-Fisheries
 P.O. Box 823
 Rufus, Oregon 97050
 Phone: 541-506-7860

John Day Dam	Inspections	Criteria	Total Number of Inspections: 14	Temperature: 72 F
	Out of Criteria	Limit		Secchi: 5.7 Ft.
NORTH FISHWAY			5 out of 6 AWS pumps available since 12/23/14	
Exit differential	0	≤ 0.5'		
Exit Control weirs	0	High setting	MID setting to stop/prevent the sockeye fallback since 6/10, PM	
Count station differential	0	≤ 0.3'		
Weir crest depth (DS gauge)	0	1.3' ± 0.1'	1.3' for shad passage since 5/27	
Entrance differential	0	1.0' - 2.0'	AVG 1.5	
SOUTH FISHWAY			3 AWS Turbines in regular service since 2/28/15	
Exit differential	0	≤ 0.5'		
Exit Control weirs	0	Mid Setting	Mid setting is normal for JDS	
Count station differential	0	≤ 0.3'		
Weir crest depth (US gauge)	0	1.3' ± 0.1'	1.3' for shad passage since 5/26	
South entrance differential	0	1.0' - 2.0'	AVG 1.6	
Entrance weir SE1	0	depth (≥ 8')	AVG 8.8	
Collection channel velocity	0	1.5 - 4 fps	AVG 3.55	
N. Entrance PH(Bay 19)differential	0	1.0' - 2.0'	AVG 1.7	
Entrance weir NE1	0	depth (≥ 8')	AVG 9.0	
Entrance weir NE2	0	depth (≥ 8')	AVG 9.0	
JUVENILE PASSAGE			Elevated smolt mortalities in daily sampling by PSMFC since 6/7; slight at first, variable/increasing	
Forebay/bypass conduit differential	0	4.0' - 5.0'	AVG 4.6	
Submersible traveling screens	0	visual inspect		
Turbine trashrack drawdown	0	<1.5', wkly	STS inspection completed by 6/18; four STSs with bad mesh were repaired/replaced with spares	
Vert barrier screen drawdown	0	<1.5', wkly	MU intake trashracks' raking completed as scheduled by 6/24, very little debris found	
Spill volume	0	30/40 %	Fish spill and TSWs' operation continues since 4/10/15 per FOP	
Spill pattern	0	per FPP	Per 2015 FOP	
Turbine Unit Priority	0	per FPP		
Turbine 1% Efficiency	0	per FPP		

SMOLT MONITORING FACILITY

Operation:

SMF in bypass mode beginning 6/28 @ approximately 11am. Mon & Thurs sampling resumes for 6 hours (7am-1pm)

JD Fisheries crew continues 24/7 swing shift schedule as required by FPP; it will continue this until the end of sampling season on 9/15.

Elevated smolt mortalities in daily sampling by PSMFC since 6/7. Minor at first, at 1.1 %, variable and reaching over 15% on 6/27, for unknown reason.

No obvious deficiency at JD JBS / SMF so could the high river water temps be responsible for the current, elevated sampling morts ? HNV ?

Debris load: very little debris.

Maintenance:

All devices working well without any issues at this time

Research:

None

Fallbacks: AVG: 48 MAX: 66 MIN: 30

OTHER JOHN DAY ISSUES:

Birds :

see the Avian Numbers tab. We report all species and locations, but in reality only gulls in the tailrace BRZ are relevant at JD.

Very few Gulls at the moment, but Pelicans have been increasingly penetrating the JD tailrace BRZ ; feeding primarily on the south edge of spill.

USADA avian hazing from a boat began 4/16. Typical hazing shifts are 06:00 - 14:30

Spillway Avian Line # 60 failed/ snapped on 6/15.

Avian Line #44 snapped around 6/30, bringing totals to 5 JD lines missing with 120 lines remaining. Planning to replace in September/October

Avian predation continues minimal/ insignificant.

Operations:

JD North Fishway in regular service; 5 out of 6 AWS pumps are available. Repair work on pump 4 continues; pump 3 has vibration issues and should be the last last in service.

JD South Fishway in regular service with 3 AWS Turbines; it is meeting the optimal FPP criteria.

MU Gatewell Drawdowns: Differentials are checked Wednesdays and Sundays; all gatewells were in criteria.

Maintenance:

JD North AWS pumps: five out of total six are available. Repair of AWS pump # 4 by a contractor started on 1/26 & is ongoing.

Calibration: All gauges/ sensors are within the criteria of 0.3' .

Research:

2015 Adult Fish Counting by Normandeau Associates commenced on 1 April, 2015 and will continue daily through 1 November.

Lamprey trapping and collection of adults & juveniles for various tribal and non-tribal studies commenced in the last week of June

Dam angling to remove NPM from JD PH tailrace, by a crew from Washington F&W underway. 2,055 season total as of 6/27.

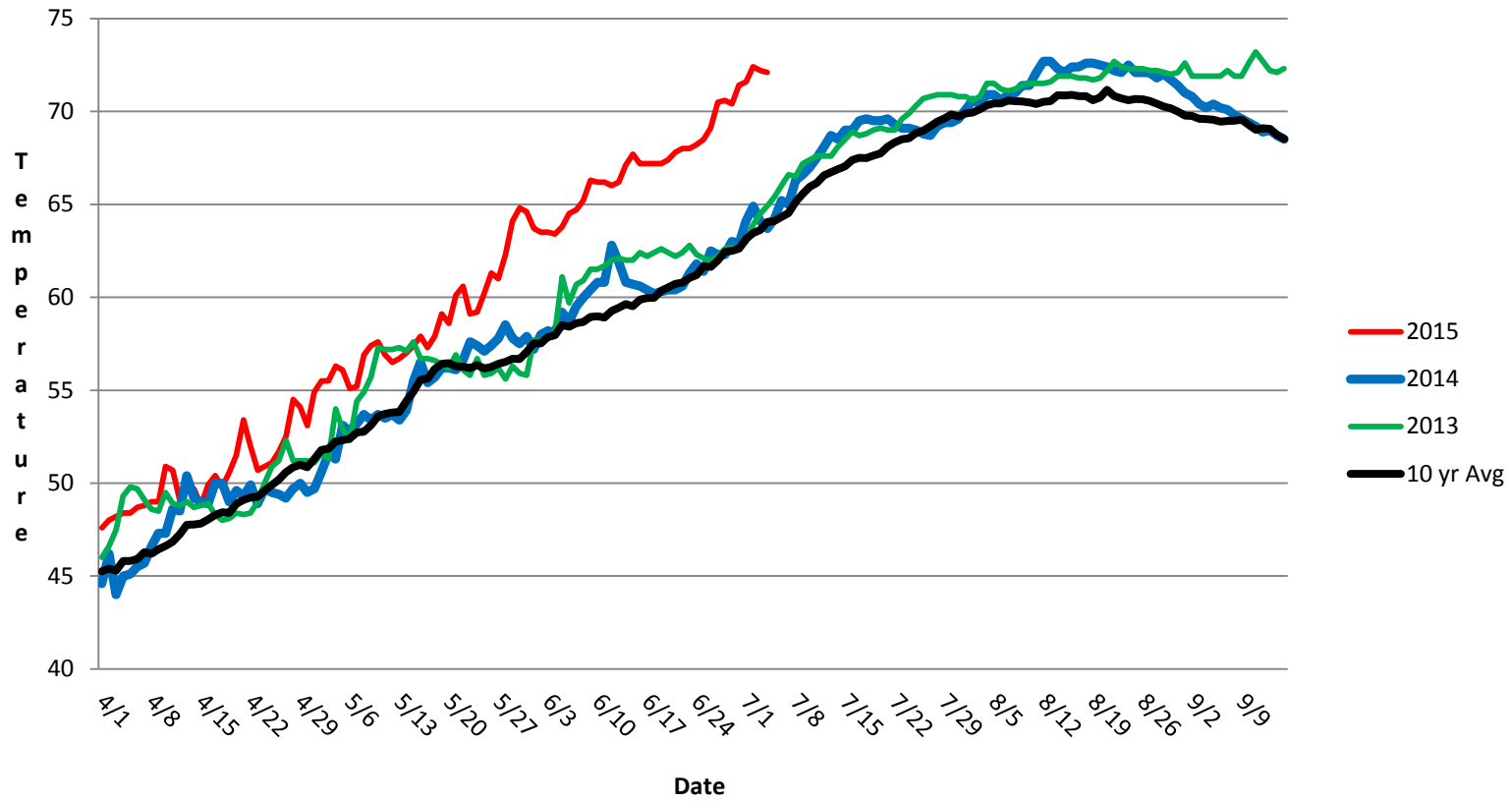
Proposal by PSMFC to install Adult PIT antennas at both JD Fishways is pending; possible installation during the next winter maintenance season 2015/16.

JD North LPS experimental operation ceased after its submersible pump (water supply) was found failed on 6/23. FFU coordinates for its repairs.

Kevin Moynahan
OPM John Day/Willow Creek Project

Date: July 4, 2015

JDA SMF Water Temp



JDA Collection Channel Velocity

Date: 3-Jul-15

By: MDL

Bay(s)	Time	Sec.	Velocity (f/s)
0-2	1:23	83	2.17
2 - 4	2:11	131	3.75
4 - 6	3:03	183	3.46
6 - 8	3:52	232	3.67
8 - 10	4:41	281	3.67
10 - 12	5:32	332	3.53
12 - 14	6:24	384	3.46
14 - 16	7:18	438	3.33
16 - 18	7:55	475	4.86
			3.55

JDA Bird Counts: 6/28/15 to 7/4/15

F(1): Forage AM survey F(2): Forage PM Survey NF(1): Non-Forage AM Survey NF(2): Non-Forage PM Survey

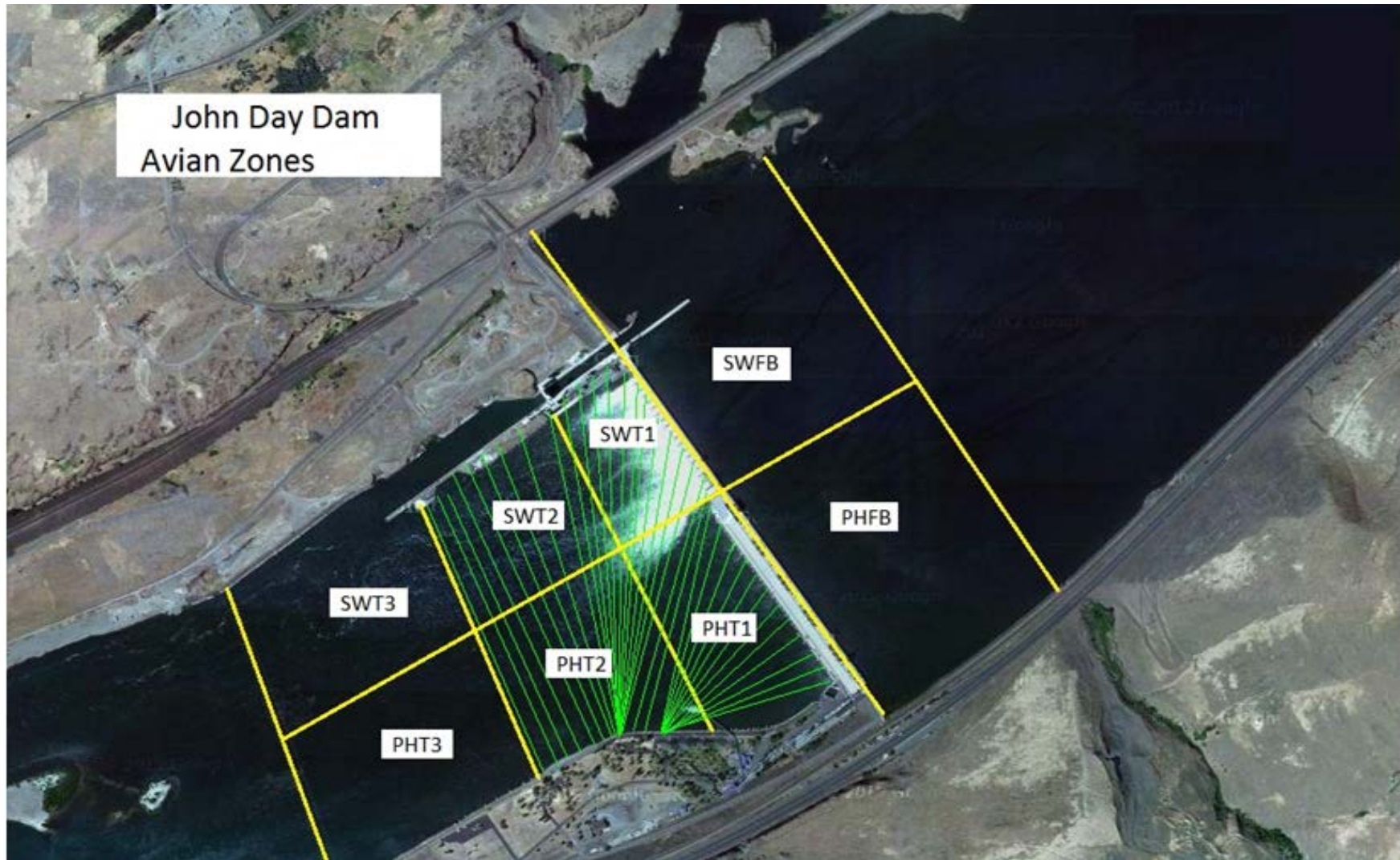
Date	Zone	Gulls				Cormorant				Caspian tern				White Pelican				Grebe				Total
		F(1)	F(2)	NF(1)	NF(2)	F(1)	F(2)	NF(1)	NF(2)	F(1)	F(2)	NF(1)	NF(2)	F(1)	F(2)	NF(1)	NF(2)	F(1)	F(2)	NF(1)	NF(2)	
28-Jun	PHFB	0	0	0	0	0	0	0	0	0	0	0	0	0	0	0	0	10	8	0	0	18
28-Jun	SWFB	0	0	0	0	0	0	0	0	0	0	0	0	0	0	0	0	0	0	0	0	0
28-Jun	PH1	0	0	0	0	0	0	0	0	0	0	0	0	18	10	0	0	0	0	0	0	28
28-Jun	PH2	0	0	0	0	0	0	0	0	0	0	0	0	3	2	0	0	0	0	0	0	5
28-Jun	PH3	0	1	0	0	0	0	0	0	0	0	0	0	3	1	0	0	0	0	0	0	5
28-Jun	SW1	0	0	0	0	0	0	0	0	0	0	0	0	0	0	0	0	0	0	0	0	0
28-Jun	SW2	0	0	0	0	0	0	0	0	0	0	0	0	3	3	0	0	0	0	0	0	6
28-Jun	SW3	2	0	0	0	0	0	0	0	0	0	0	0	0	2	0	0	0	0	0	0	4
Avg/Survey		2	0	0	0	0	0	0	0	0	0	0	0	23	0	0	0	9	0	0	0	66
29-Jun	PHFB	0	0	0	2	0	0	0	0	0	0	0	0	0	0	0	0	0	0	8	11	21
29-Jun	SWFB	0	0	0	0	0	0	0	0	0	0	0	0	0	0	0	0	0	0	0	0	0
29-Jun	PH1	0	0	0	0	0	0	0	0	0	0	0	0	18	0	0	0	0	0	0	0	18
29-Jun	PH2	0	0	0	0	0	0	0	0	0	0	0	0	2	2	0	0	0	0	0	0	4
29-Jun	PH3	0	0	0	0	0	0	0	0	0	0	0	0	7	3	0	0	0	0	0	0	10
29-Jun	SW1	0	0	0	0	0	0	0	0	0	0	0	0	0	0	0	0	0	0	0	0	0
29-Jun	SW2	0	0	0	0	0	0	0	0	0	0	0	0	0	0	0	0	0	0	0	0	0
29-Jun	SW3	1	3	0	0	0	0	0	0	0	0	0	0	0	0	0	0	0	0	0	0	4
Avg/Survey		2	1	0	0	0	0	0	0	0	0	0	0	16	0	0	0	0	0	10	0	57
30-Jun	PHFB	0	0	0	0	0	0	0	0	0	0	0	0	0	0	0	0	11	9	0	0	20
30-Jun	SWFB	0	0	0	0	0	0	0	0	0	0	0	0	0	0	0	0	0	0	0	0	0
30-Jun	PH1	0	0	0	0	0	0	0	0	0	0	0	0	18	8	0	0	0	0	0	0	26
30-Jun	PH2	0	0	0	0	0	0	0	0	0	0	0	0	5	7	0	0	0	0	0	0	12
30-Jun	PH3	0	0	0	0	0	0	0	0	0	0	0	0	2	1	0	0	0	0	0	0	3
30-Jun	SW1	0	0	0	0	0	0	0	0	0	0	0	0	0	0	0	0	0	0	0	0	0
30-Jun	SW2	0	0	0	0	0	0	0	0	0	0	0	0	0	2	0	0	0	0	0	0	2
30-Jun	SW3	0	3	0	0	0	0	0	0	0	0	0	0	8	0	0	0	0	0	0	0	11
Avg/Survey		2	0	0	0	0	0	0	0	0	0	0	0	26	0	0	0	10	0	0	0	74
1-Jul	PHFB	0	0	3	0	0	0	0	0	0	0	0	0	0	0	0	0	0	0	12	0	15
1-Jul	SWFB	0	0	0	0	0	0	0	0	0	0	0	0	0	0	0	0	0	0	0	0	0
1-Jul	PH1	0	0	0	0	0	0	0	0	0	0	0	0	3	0	0	0	0	0	0	0	3
1-Jul	PH2	0	0	0	0	0	0	0	0	0	0	0	0	3	2	0	0	0	0	0	0	5
1-Jul	PH3	0	0	2	3	0	0	0	0	0	0	0	0	13	8	0	0	0	0	0	0	26
1-Jul	SW1	0	0	0	0	0	0	0	0	0	0	0	0	0	0	0	0	0	0	0	0	0
1-Jul	SW2	0	0	0	0	0	0	0	0	0	0	0	0	0	0	0	0	0	0	0	0	0
1-Jul	SW3	0	0	0	0	0	0	0	0	0	0	0	0	11	0	0	0	0	0	0	0	11
Avg/Survey		0	4	0	0	0	0	0	0	0	0	0	0	20	0	0	0	0	0	6	0	60

JDA Bird Counts: 6/28/15 to 7/4/15

F(1): Forage AM survey F(2): Forage PM Survey NF(1): Non-Forage AM Survey NF(2): Non-Forage PM Survey

Date	Zone	Gulls				Cormorant				Caspian tern				White Pelican				Grebe				Total	
		F(1)	F(2)	NF(1)	NF(2)	F(1)	F(2)	NF(1)	NF(2)	F(1)	F(2)	NF(1)	NF(2)	F(1)	F(2)	NF(1)	NF(2)	F(1)	F(2)	NF(1)	NF(2)		
2-Jul	PHFB	0	0	1	0	0	0	0	0	0	0	0	0	0	0	0	0	0	0	9	0	10	
2-Jul	SWFB	0	0	4	0	0	0	0	0	0	0	0	0	0	0	0	0	0	0	0	0		4
2-Jul	PH1	0	0	0	0	0	0	0	0	0	0	0	0	9	10	0	0	0	0	0	0		19
2-Jul	PH2	0	0	0	0	0	0	0	0	0	0	0	0	13	2	0	0	0	0	0	0		15
2-Jul	PH3	9	0	0	1	0	0	0	0	0	0	0	0	5	0	0	2	0	0	0	0		17
2-Jul	SW1	0	0	0	0	0	0	0	0	0	0	0	0	0	0	0	0	0	0	0	0		0
2-Jul	SW2	0	0	0	0	0	0	0	0	0	0	0	0	0	0	0	0	0	0	0	0		0
2-Jul	SW3	0	0	0	0	0	0	0	0	0	0	0	0	4	10	6	0	0	0	0	0		20
Avg/Survey		5		3		0		0		0		0		27		4		0		5	85		
3-Jul	PHFB	0	0	0	0	0	0	0	0	0	0	0	0	0	0	0	0	0	0	0	11	11	
3-Jul	SWFB	0	0	0	0	0	0	0	0	0	0	0	0	0	0	0	0	0	0	0	0		0
3-Jul	PH1	0	1	0	0	0	0	0	0	0	0	0	0	12	4	0	0	0	0	0	0		17
3-Jul	PH2	0	0	0	0	0	0	0	0	0	0	0	0	6	9	0	0	0	0	0	0		15
3-Jul	PH3	5	6	0	0	0	0	0	0	0	0	0	0	8	15	0	0	0	0	0	0		34
3-Jul	SW1	0	0	0	0	0	0	0	0	0	0	0	0	0	0	0	0	0	0	0	0		0
3-Jul	SW2	0	0	0	0	0	0	0	0	0	0	0	0	0	0	0	0	0	0	0	0		0
3-Jul	SW3	10	0	0	0	0	0	0	0	0	0	0	0	11	0	0	0	0	0	0	0		21
Avg/Survey		11		0		0		0		0		0		33		0		0		6	98		
4-Jul	PHFB	0	0	1	0	0	0	0	0	0	0	0	0	0	0	0	0	0	0	14	11	26	
4-Jul	SWFB	0	0	1	0	0	0	0	0	0	0	0	0	0	0	0	0	0	0	0	0		1
4-Jul	PH1	0	0	0	0	0	0	0	0	0	0	0	0	14	0	2	2	0	0	0	0		18
4-Jul	PH2	0	0	0	1	0	0	0	0	0	0	0	0	0	0	6	1	0	0	0	0		8
4-Jul	PH3	3	5	0	0	0	0	0	0	0	0	0	0	0	0	3	0	0	0	0	0		11
4-Jul	SW1	0	0	0	0	0	0	0	0	0	0	0	0	0	0	0	0	0	0	0	0		0
4-Jul	SW2	0	0	0	0	0	0	0	0	0	0	0	0	0	0	1	0	0	0	0	0		1
4-Jul	SW3	1	0	0	0	0	0	0	0	0	0	0	0	0	0	6	0	0	0	0	0		7
Avg/Survey		5		2		0		0		0		0		7		11		0		13	72		
Totals	Gulls				Cormorant				Caspian tern				White Pelican				Grebe				Total		
	F		NF		F		NF		F		NF		F		NF		F		NF				
Weekly Total	50		19		0		0		0		0		300		29		38		76		512		
Avg/Survey	4		1		0		0		0		0		21		2		3		5		37		

John Day Dam
Avian Zones



John Day Weekly Averages

	Temp:	Secchi:	Fallbacks
Sun	71	6.0	30
Mon	70	6.0	Bypass
Tues	71	6.0	Bypass
Wed	72	5.0	Bypass
Thur	72	5.0	66
Fri	73	6.0	Bypass
Sat	72	6.0	Bypass
AVG:	72	AVG: 5.7	AVG 48
			MAX 66
			MIN 30

	NE1	NE2	S.Ent	SE1	N.Ent	JBS Diff	Bay19
Sun	8.9	9.0	1.4	9.0	1.5	4.6	1.5
Sun	8.6	8.8	1.6	9.0	1.6	4.5	1.6
Mon	9.4	9.5	1.5	9.5	1.4	4.5	1.5
Mon	9.3	9.5	1.5	9.3	1.6	4.5	1.6
Tues	8.9	9.0	1.6	8.5	1.6	4.5	1.7
Tues	9.0	9.0	1.5	8.8	1.4	4.6	1.8
Wed	8.7	8.7	1.7	8.4	1.5	4.5	1.6
Wed	9.6	9.5	1.7	9.2	1.5	4.6	1.5
Thur	8.7	8.6	1.6	8.6	1.6	4.6	1.9
Thur	9.0	8.9	1.5	8.9	1.6	4.6	1.8
Fri	9.0	8.9	1.7	8.5	1.5	4.6	1.6
Fri	8.9	8.9	1.5	9.0	1.5	4.5	1.8
Sat	9.0	9.1	1.8	8.5	1.6	4.5	1.5
Sat	8.7	8.8	1.8	8.5	1.5	4.7	1.8
AVG:	9.0	9.0	1.6	8.8	1.5	4.6	1.7